

www.print-scm.com

Supply Chain Management for international print-productions

SUMMARY

www.print-scm.com



manage all print-processes in one tool



cost reduction due to

- ⇒ streamlined processes
- ⇒ constant monitoring of print production
- ⇒ purchasing
- ⇒ Marketing
- ⇒ Printing-company
- ⇒ Agency



link all scm-members in one tool



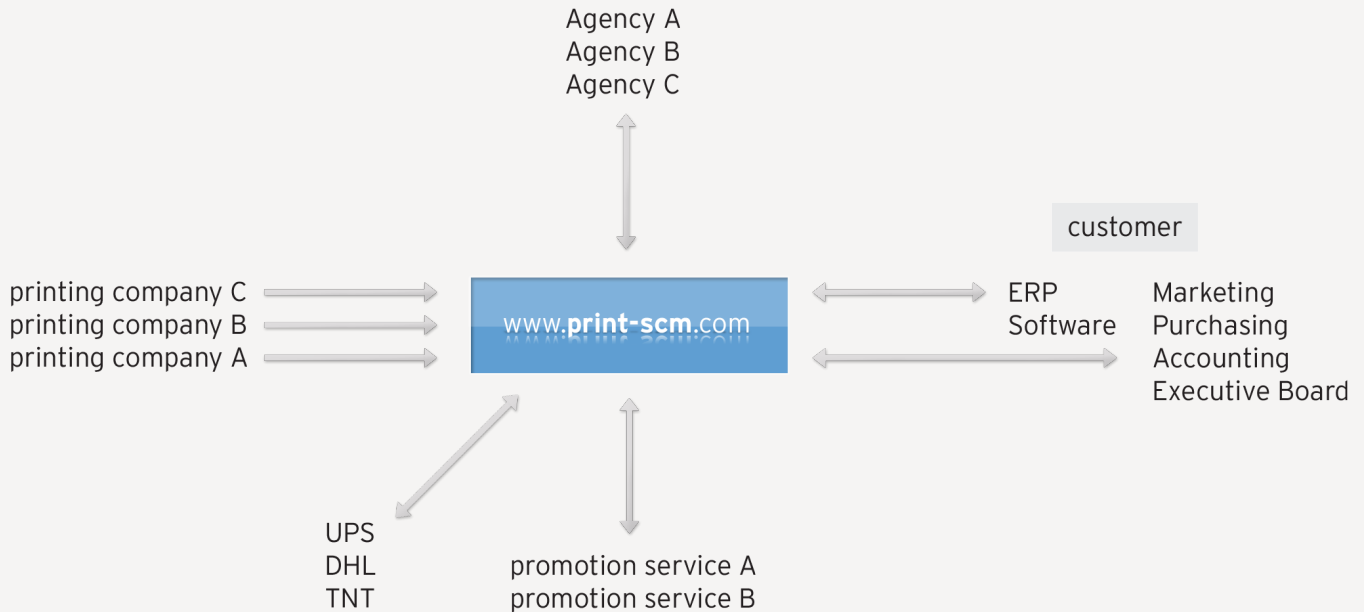
enhanced CRM-functions



advanced interfaces to all major CRM and ERP-platforms

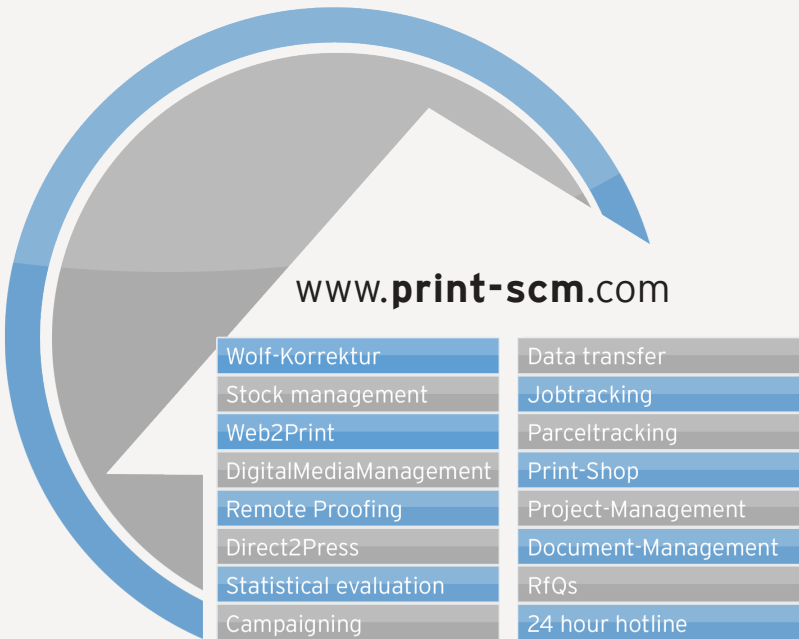
FULLY INTERLACED






print-scm.com offers interfaces for all members of the supplychain



MODULES FOR ALL NEEDS

Everything under one roof!



-  internationally applicable
-  multilanguage
-  various interfaces
-  single Login
-  adjustable Corporate Design

EACH MODULE IN DETAIL

wolf-korrektur.de

...a massive tool to keep track of each correction cycle



always ensures the same correction-level for all users



log file of all corrections





easy to use time-measuring for connection cycles




do-it-yourself changes within the Corporate Design Guidelines

Projektdetails

Übersicht Kundenverwaltung Projektverwaltung eigene Daten Logout

 Korrektur  druckreif

Bitte geben Sie die Projektdaten an:

Kunde Rheinessen-Touristik GmbH
Datum 28.10.2008
Auftragsnr 08-3338
Auftrag Rheinessen-Programm 2009
Status  **DRUCKREIF** setzen

Korrekturverlauf hinzufügen

Korrekturverlauf	PDF-/ZIP-File	Bemerkung
11.12.2008 10:13 Uhr	PDF-File ansehen	Umschlag-final end
11.12.2008 09:12 Uhr	PDF-File ansehen	Umschlag-final
11.12.2008 08:46 Uhr	PDF-File ansehen	Letzte Seite-final
11.12.2008 08:46 Uhr	PDF-File ansehen	Feedback(S.47)-final
11.12.2008 08:45 Uhr	PDF-File ansehen	Interessengemeinschaften-final

EACH MODULE IN DETAIL

Stock Control

...provides you a detailed insight of your external stored printing proofs



webbased inventory



24/7 ordering



automatically "out-of-stock"- information



controlled access

EACH MODULE IN DETAIL

Web2Print

...a state of the art module that suits all your needs



for all stationary items: business cards, letterheads, envelopes etc.



for complete marketing-campaigns with complex structures



incl. approval processes



EACH MODULE IN DETAIL

DigitalMediaManagement

...organize, find, share. Any Media, anywhere.



ideal for large organizations: organize, share and track an ever increasing number of media-files



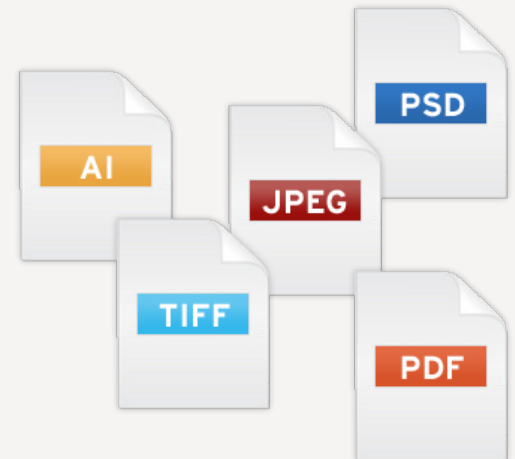
control & standardize branding



maximize the use of digital files and intellectual property



control license costs



EACH MODULE IN DETAIL

Remote proofing

...saves you time by producing your proofs when you need them



advanced standardized technology



incl. JDF-Color-Management



produces color-matching proofs within seconds wherever needed



EACH MODULE IN DETAIL

Direct2Press

...sends your data stream directly to press



the most secure way of external printing



for invoices, medical information, payslips



encrypted data transfer



100% tracking of printed goods






AUTHORIZED
Print Service Provider

EACH MODULE IN DETAIL

Reporting

...lets you easily control ALL projects

-  reporting tool for all modules
-  analysis of all cost savings
-  design your own reports



EACH MODULE IN DETAIL

File transfer

...sends your files to the right address



unlimited file upload



logs all your uploads/downloads



encrypted file transfer



easy to use webinterface

EACH MODULE IN DETAIL

Jobtracking

...provides on time information of all print-productions



monitor all jobs online



exact status of every job



real time overview of delays,
intime deliveries



EACH MODULE IN DETAIL

Parceltracking

...informs you about the status of parcels



tracks all major forwarders



comfortable overview in one screen



no extra login required

EACH MODULE IN DETAIL

Print-Shop

...easy online shopping of printing-goods



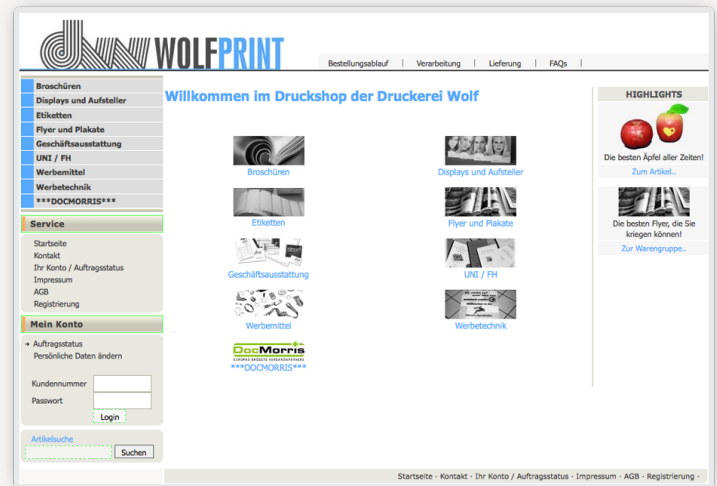
print-shop for all items



archives already printed jobs



PDF-check



The screenshot shows the Wolfprint website interface. At the top right, there is a navigation menu with links for 'Bestellungsablauf', 'Verarbeitung', 'Lieferung', and 'FAQs'. The main header features the 'WOLFPRINT' logo and the text 'Willkommen im Druckshop der Druckerei Wolf'. Below the header, there is a grid of product categories with corresponding images and labels: 'Broschüren', 'Displays und Aufsteller', 'Etiketten', 'Flyer und Plakate', 'Geschäftsausstattung', 'UNI / FH', 'Werbemittel', and 'Werbetechnik'. A 'Service' section is also visible, listing options like 'Startseite', 'Kontakt', 'Ihr Konto / Auftragsstatus', 'Impressum', 'AGB', and 'Registrierung'. A 'Mein Konto' section includes a login form with fields for 'Kundennummer' and 'Passwort', and a 'Login' button. At the bottom right, there is a 'HIGHLIGHTS' section with promotional text and images, such as 'Die besten Äpfel aller Zeiten!' and 'Die besten Flyer, die Sie kriegen können!'. The footer contains a link to 'Startseite' and other navigation options.

EACH MODULE IN DETAIL

Project-Management

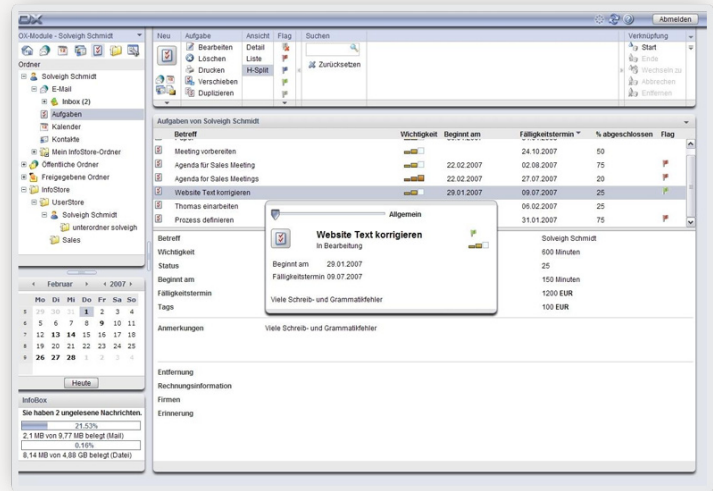
...because keeping track of printing-goods is complex



incl. calendar, tasks, milestones, subtasks, addressbook



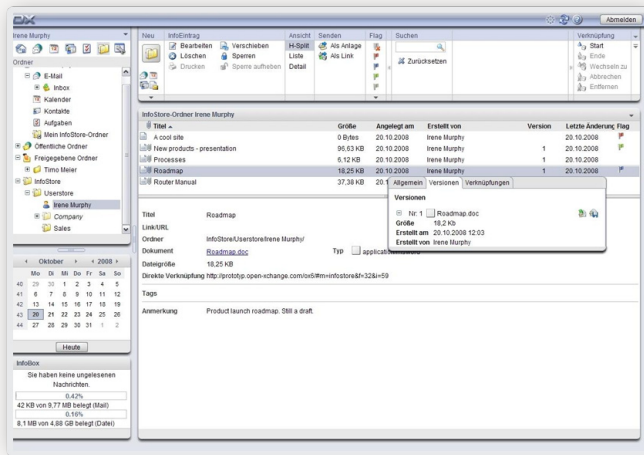
import/export-functions



EACH MODULE IN DETAIL

Document-Management

...organises all your paper-work



electronical filing of all quality-documents
(especially for pharma-industry)



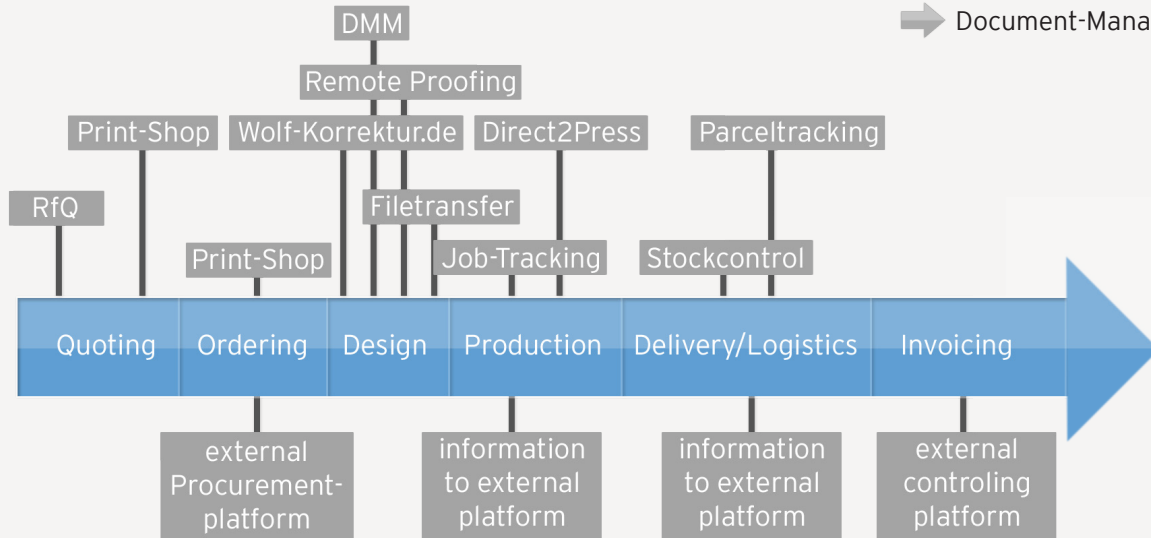
stores all quotes, invoices, delivery sheets

www.print-scm.com

Flow

Steering tools

- ➔ Project-Management
- ➔ Statistics
- ➔ Document-Management



BENEFITS

for the executive board

- 1 total cost-control
- 2 savings in process-management
- 3 savings in print/media-buying



BENEFITS

for Marketing

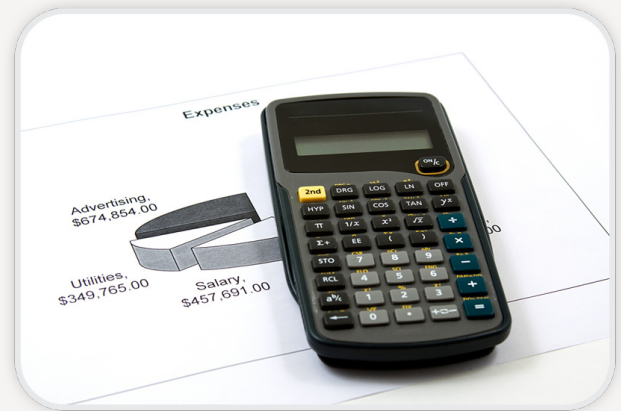
- 1 compliance with the Corporate Design
- 2 secure processes
- 3 constant overview of all media productions at any time
- 4 effective tools for campaigning
- 5 interface to CRM-applications



BENEFITS

for purchasing

- 1 total cost control
- 2 savings in process-management
- 3 savings in print/media-buying
- 4 easy handling of C-goods



CONTACT

Wolf Print

Konrad-Adenauer-Str. 36

55218 Ingelheim

Thorsten Winterheimer

Tel.: +49 (0) 6132 79 171-24

Fax: +49 (0) 6132 79 171-11

Mail: t.winterheimer@wolf-ingelheim.de